



MANUAL

Installation Manual

BREL HOME Hub & Coulisse Motionblinds Hub Quick App

Version: 1.17

Date: 26-04-2024



Introduction

The instruction is written for installers working with the Nice-FIBARO home management system. The document contains information about the integration procedure of the BREL HOME / Coulisse Motionblinds Hub into the Nice-FIBARO home management system. Because the integration of both types of hubs is similar, in the manual we only mention BREL HOME hub, but Coulisse Motionblinds Hub is also meant by it.

This Quick App supports most types of BREL/Coulisse solutions that can be operated via the BREL HOME / Coulisse Motionblinds Hubs. Also, the variant 'Top Down / Bottom Up' can be controlled, for which two separate controls are created in the Nice-FIBARO gateway. By incorporating these functions into smart scenes, the ideal atmosphere can be realized at the touch of a button!

Disclaimer

The communications of the BREL HOME and Motionblinds hubs work with UDP technology. This is less reliable protocol than the standard TCP network communication protocol. The UDP protocol does not check if the data has arrived at the network client (= Nice-FIBARO Gateway). On Wi-Fi networks with less to poor coverage, this can result in the Nice-FIBARO Gateway not being able to properly read the latest status. This is not a bug in the Quick App, but normal behavior of UDP traffic on poor connections!



Inhoudsopgave

Requirements	5
Firmware	5
Device support	5
Optimalisation	5
Device state with 1-way communication in Nice-FIBARO Gateways	5
BREL HOME configuration	6
Installation of the BREL HOME Hub is beyond the scope of this manual. Before proceeding, make sure that the:	6
1. BREL HOME hub is connected to the same (Wi-Fi) network the Nice-FIBARO Gateway; Fout! Bladwijzer niet gedefinieerd.	
2. BREL HOME products you want to control from the Nice-FIBARO Gateway are connected to the BREL HOME Hub Fout! Bladwijzer niet gedefinieerd.	
Step 1. Retrieving the BREL HOME HUB-03 Key	6
1. Open the BREL HOME app on the Smartphone.	6
2. Login with correct BREL account	6
3. Go to 'Profile' tab (bottom right of screen).	6
Quickly click 5x on the version number shown in the screen (under 'Logout').	6
4.	6
Step 2. Installation of the BREL HOME Quick App	7
1. Log in to the Nice-FIBARO Gateway;	7
2. Go to Settings -> 1. Devices;	7
Step 3. Configuration of the BREL HOME Quick App	8
Device type setting on the Nice-FIBARO Gateway	9
Management of the BREL HOME devices	9
If you add or remove BREL devices to/from the BREL HOME Hub you can synchronize them again with your Nice-FIBARO Gateway by clicking the button: 'Reload devices' in the BREL HOME Quick App.	9
In short, devices that no longer exist on the BREL HOME Hub are then automatically removed in the Nice-FIBARO Gateway and new devices are automatically added.	9



Debug mode	9
Control of BREL HOME devices via the Yubii app, scenes and profiles.	10
Block Scenes	10
Scenario's (Morning & Evening)	10
Profiles	10
Frequently Asked Questions	11



Requirements

1. BREL Home HUB-03 or Coulissee Motionblinds CMD-01 Hub
2. BREL Home HUB Quick App for HC3/HC3L/Yubii Home
3. FIBARO Home Center 3 / Home Center 3 Lite / Nice Yubii Home (min. FW version 5.160.30)

Firmware

De Quick App is tested with:

- BREL Home HUB-03 with firmware A1.0.8_B0.1.2 with protocol version: 0.9
- Motionblinds CMD-01 with firmware A1.0.7_B0.1.6 with protocol version: 0.9
- De Home Center 3 (Lite)/Yubii Home runs firmware 5.160.30

Device support

The Quick App has been tested with BREL mono-directional (1-way) and bi-directional (2-way) motors and with Motionblinds motors. These include electric (and controllable) roller blinds, Venetian blinds and top-down-bottom-up solutions.

If you are missing a device type, please contact JDK Support. Then we will work with you to see if we can incorporate the device type into this Quick App.

Optimisation

If the Quick App does not detect motors that support 2-way communication then it will no longer request periodic status updates from the device (“polling”). This is to minimize LAN network traffic.

Device state with 1-way communication in Nice-FIBARO Gateways

BREL devices operating with 1-way communication only cannot report status (e.g. state of motor). This is not due to the Quick App but is a property of the communication protocol used. Thus, the status is also not updated in the Nice-FIBARO Gateway. You should be aware of this when creating scenes on the Nice-FIBARO Gateways. The status of devices using the bi-directional protocol is updated in the Nice-FIBARO Gateway and in the BREL HOME app.

BREL HOME configuration

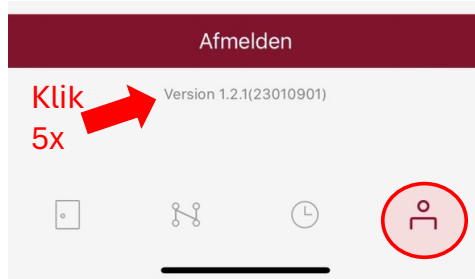
Installation of the BREL HOME Hub is beyond the scope of this manual. Before proceeding, make sure that the:

1. BREL HOME hub is connected to the same (Wi-Fi) network the Nice-FIBARO Gateway;
2. BREL HOME products you want to control from the Nice-FIBARO Gateway are connected to the BREL HOME Hub;
3. BREL HOME products are functioning properly via the BREL HOME app on your phone and/or tablet.

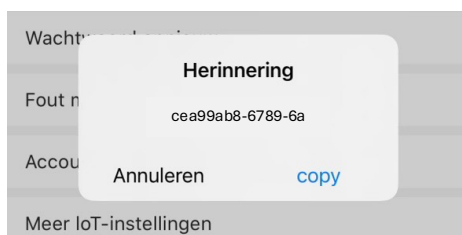
Tip: Reserve the IP address of the BREL HOME Hub in the DHCP settings of your network router.

Step 1. Retrieving the BREL HOME HUB-03 Key

1. Open the BREL HOME app on the Smartphone;
2. Login with correct BREL account;
3. Go to 'Profile' tab (bottom right of screen);
4. Quickly click 5x on the version number shown in the screen (under 'Logout');



5. The required 'key' for communication appears as a pop-up in the screen. (NB. Key shown below is an example and fictitious);



6. Copy or write down the key shown for later use in the BREL HOME Quick App.



Step 2. Installation of the BREL HOME Quick App

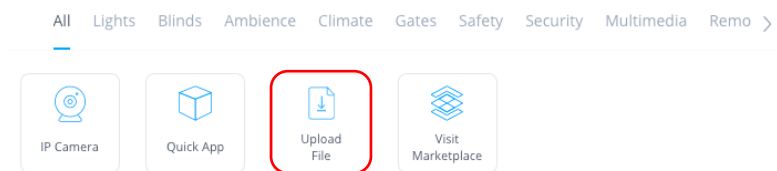
1. Log in to the Nice-FIBARO Gateway;
2. Go to Settings -> 1. Devices;
3. Click on the blue + sign to add a device;



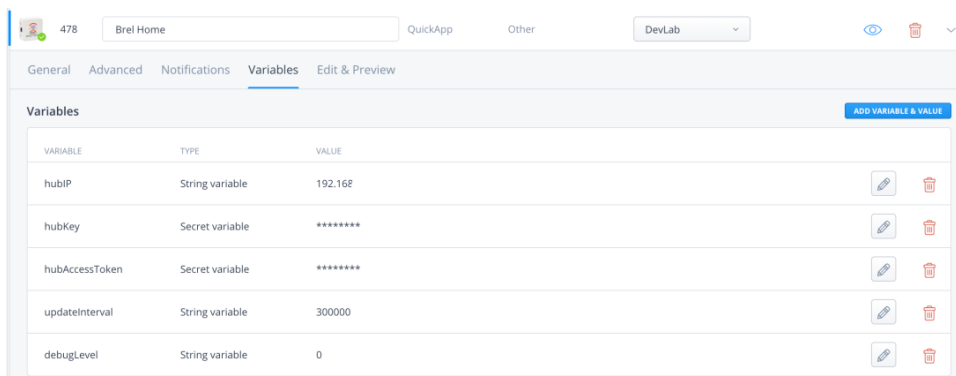
4. In the Add Device window, choose the 'Other Device' option;



5. Select 'Upload File';



6. Open the file: **Brel_Home_v1.17.fqax**, that was send to you by JDK.
NB. The version-number of the Quick App might be different.
7. The Quick App will be installed and become visible in the Device-list.

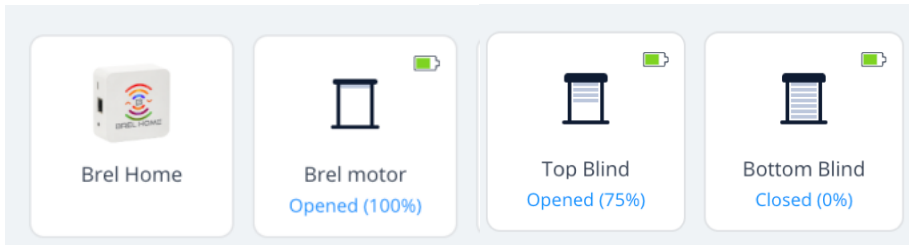


Step 3. Configuration of the BREL HOME Quick App

1. Go to Settings -> 1. Devices;
2. Click on the new BREL HOME device;
3. Select the 'Variables' tab;
4. Enter the following variables:

hubIP	The IP-address of the Brel Home HUB-03.
hubKey	The secret key of the Brel Home HUB-03. This key was noted in step 1.
hubAccessToken	Is automatically filled after the QA is started.
updateInterval	How often the status of the motors is retrieved. By default every 5 minutes (300000 milliseconds) ¹ .
debugLevel	Defaults to 0, can be set to 1 to see additional logging information when starting the QA.

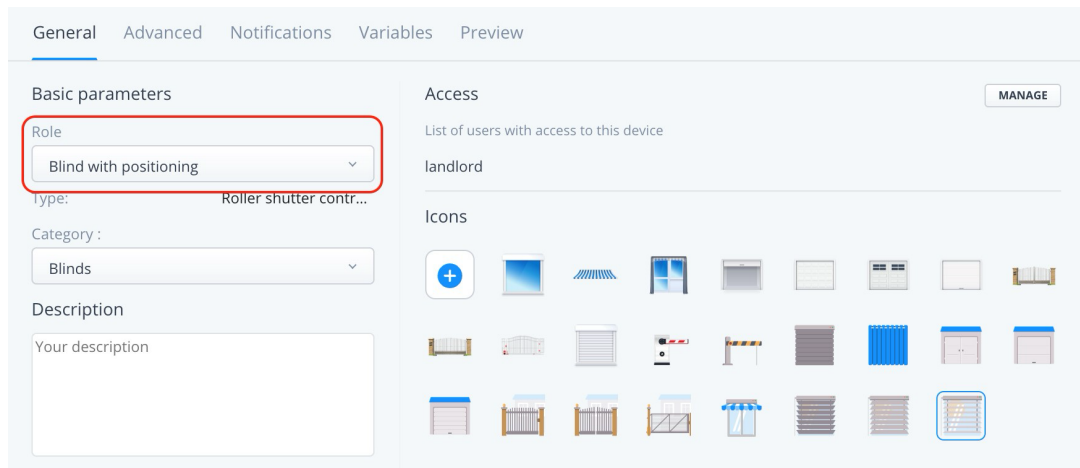
5. Press the **Save**-button to save the Quick App variables.
6. Now the BREL HOME Quick App will log in to the BREL HOME Hub to generate a unique token to enable communication between your Nice-FIBARO Gateway and your BREL HOME Hub.;
7. If successful, the BREL devices available in the BREL HOME Hub will be added to the Nice-FIBARO Gateway.



¹ Note: The Nice-FIBARO Gateway does not support UDP multicast, therefore the Quick App queries the hub every 5 minutes for the latest status of the motors. This polling interval can be adjusted in the QA variables. It is recommended not to set this interval too short, especially in homes with many Brel motors, as it puts additional load on the Nice-FIBARO Gateway and/or BREL HOME Hub!

Device type setting on the Nice-FIBARO Gateway

Note: If a blind is installed, the type is not automatically set in the Nice-FIBARO Gateway. This must be defined by yourself in the 'Fundamental parameters' of the device:



Important: Tilting the slats of a blind has not been specifically tested. If you own a blind motor with tilt function, please contact JDK Support if this function is not working properly. Then you will be signed up for a test program to build this into the Quick App.

Management of the BREL HOME devices

If you add or remove BREL devices to/from the BREL HOME Hub you can synchronize them again with your Nice-FIBARO Gateway by clicking the button: 'Reload devices' in the BREL HOME Quick App.

In short, devices that no longer exist on the BREL HOME Hub are then automatically removed in the Nice-FIBARO Gateway and new devices are automatically added.

Please note that when replacing defective BREL HOME products, in existing scenes, change the id of the old device to the id of the new device!

Debug mode

If the BREL Home QA is not working properly then JDK Support can request additional log information. Activating the **Debug mode** button will show additional debug information in the Nice-FIBARO Gateway log. **After 15 minutes**, the debug mode automatically turns off again to avoid flooding the Nice-FIBARO Gateway log with information.

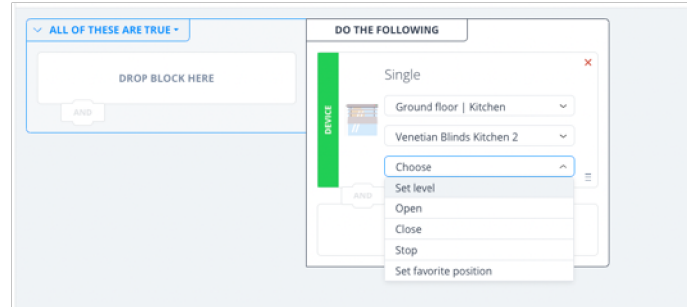
If there are problems starting the BREL Home QA, the Quick App variable debugLevel can be set to 1. This activates debug mode as soon as save is clicked and generates additional logging when initializing the QA.



Control of BREL HOME devices via the Yubii app, scenes and profiles.

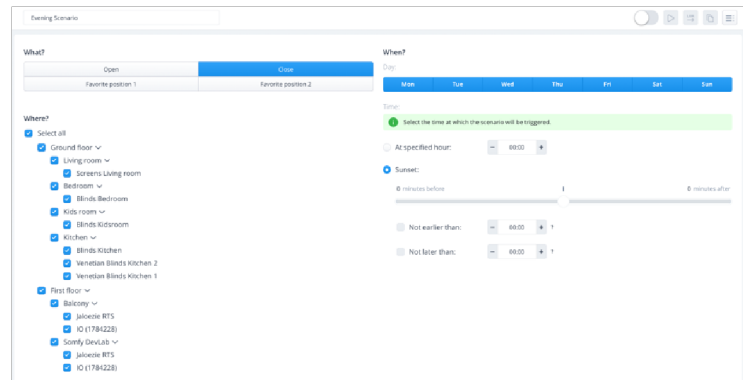
Block Scenes

The motor can be controlled via scenes with the following actions: level, open, close, stop and favorite position. Thereby the level can only be operated if the motor feedback the status to the BREL HOME Hub.



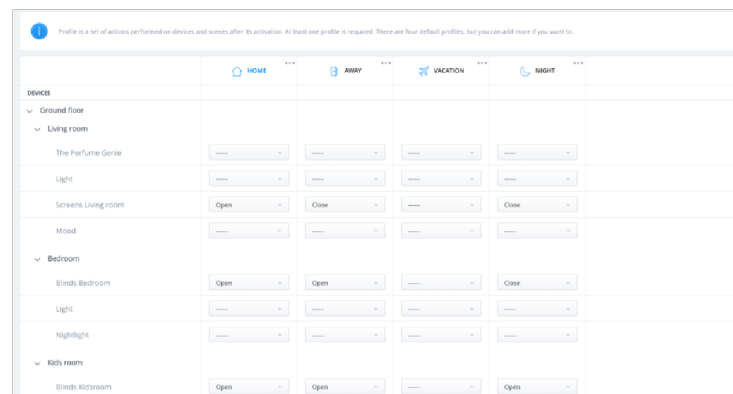
Scenario's (Morning & Evening)

The blinds are assigned as a "Roller Shutter" in the system. This means you can include the motor in the simple scenarios. The scenarios are designed to open/close blinds based on a specific time. Moreover, the scenarios can be customized via the Yubii App.



Profiles

The status of the blinds can be set via the Profiles. This allows you to easily close all blinds when you are absent. When you are present, you can then open the blinds again. Setting the trigger for a profile can be done via the scenes or manually via the Yubii App.





Frequently Asked Questions

Can I also control the BREL/Motionblinds motors without the BREL HOME Hub with the Nice-FIBARO Gateways?

BREL motors can be controlled without BREL HOME Hub only if the BREL motor is equipped with additional signal cable for home management systems or where the standard control is done with a blind switch (pulse). All radio operated BREL motors can only be controlled via the BREL HOME Hub.

Can I control the BREL HOME motor via a Z-Wave switch or remote control?

Yes, you can control the position of the motor with scene activation of a Z-Wave switch or remote control. For example: with 1x press the motor up, 2x press the motor down, 3x press go to favorite position.

Can I infinitely control and position the BREL HOME motor via a Z-Wave switch or remote control?

No, this is not possible. With Z-Wave actors, we can interconnect the modules using associations. With IP integration, this is not possible.

Can the Quick App also read the status of the BREL motor?

1-way communication motors:

BREL devices operating with the mono-directional protocol only support 1-way communication and therefore cannot report status. This is not due to the Quick App but is a feature of the BREL HOME protocol. Thus, the status is also not updated in the Nice-FIBARO Gateway if the motor is opened or closed in any other way. You should be aware of this when creating scenes with the Nice-FIBARO Gateway.

2-way communication motors:

The status of devices using the bi-directional protocol (2-way) does get updated in the Nice-FIBARO Gateway and in the BREL HOME app.

My device is not recognized, now what?

Is there a device type missing? Please contact us for a test program to see if we can incorporate this BREL device into the Quick App.